

NARROW? OR WIDE?



Create the paths & choose wisely
Matthew 7:13-14

Narrow

Wide

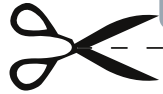


NARROW? OR WIDE?



Create the paths & choose wisely
Matthew 7:13-14

Cut them out



**Leads to Life -
Heaven**

Easy

**Many
find it**

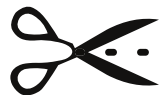
**Leads to
Death - Hell**

Hard

**Few
find it**

**Closely
defined/small**

**Broad/spread -
out place**



“Enter by the narrow gate. For the gate is wide and the way is easy that leads to destruction, and those who enter by it are many. For the gate is narrow and the way is hard that leads to life, and those who find it are few.” - Matthew 7:12-13

SHEEP?



OR WOLF?



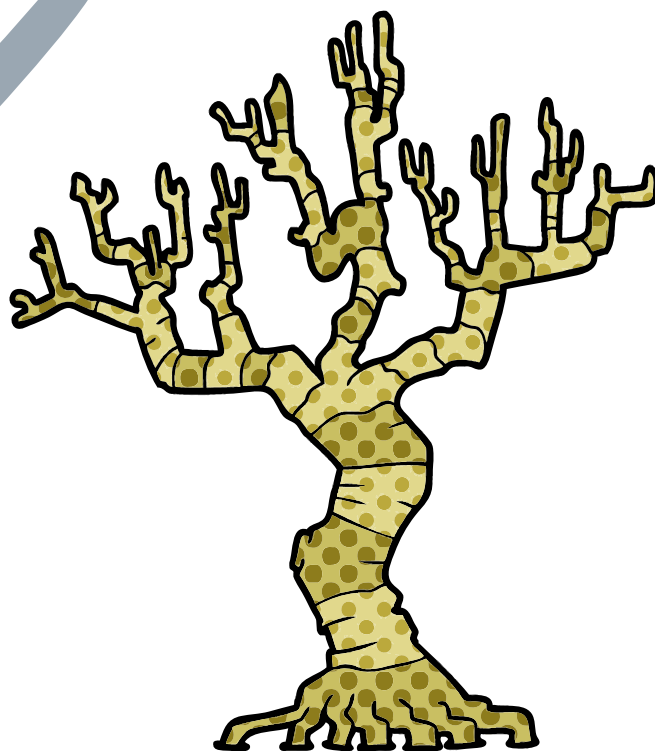
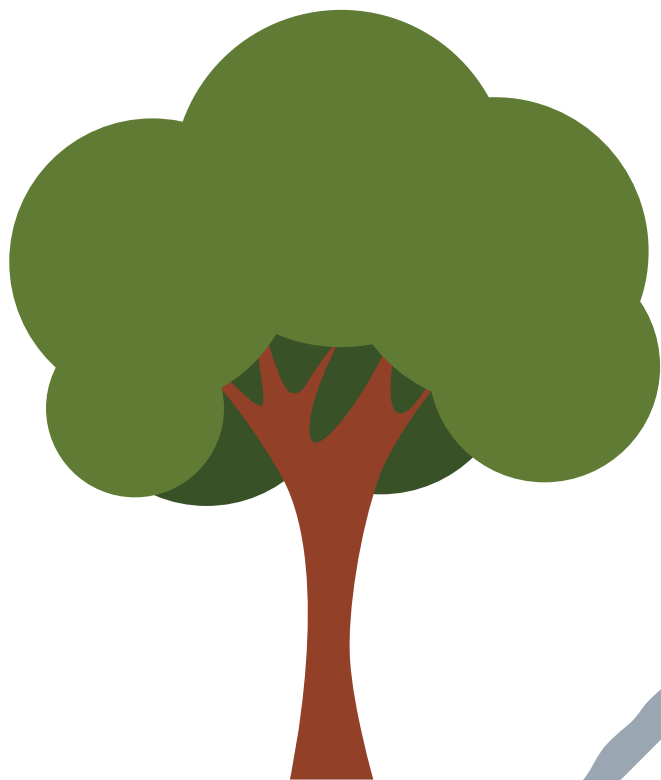
WARNING!



BEWARE
of WOLVES

#2

Judge them by their fruit.



SHEEP?



OR WOLF?



WARNING!



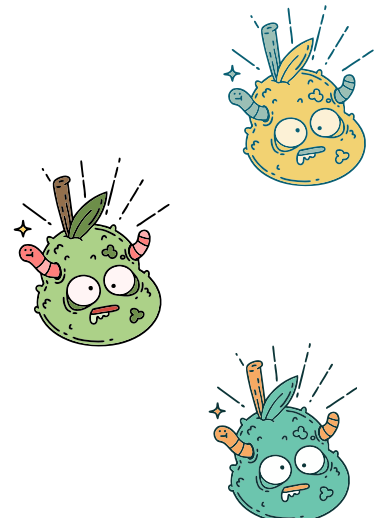
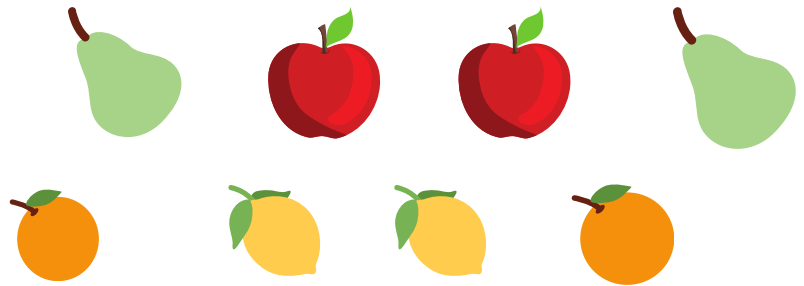
BEWARE of WOLVES

#

2

Judge them by their fruit.

Cut them out



“Beware of false prophets, who come to you in sheep's clothing but inwardly are ravenous wolves. You will recognize them by their fruits. Are grapes gathered from thornbushes, or figs from thistles? So, every healthy tree bears good fruit, but the diseased tree bears bad fruit. A healthy tree cannot bear bad fruit, nor can a diseased tree bear good fruit. Every tree that does not bear good fruit is cut down and thrown into the fire. Thus you will recognize them by their fruits. - Matthew 7:15-20



HEAVEN?



OR HELL?

WARNING!

#3

THE ONE WHO DOES
THE WILL OF MY
FATHER WHO IS IN
HEAVEN.

which
one?

WORKERS OF
LAWLESSNESS
/SIN.

Draw a line to match the place to the kind of person who goes there and then circle the one you want to be.

“Not everyone who says to me, ‘Lord, Lord,’ will enter the kingdom of heaven, but the one who does the will of my Father who is in heaven. On that day many will say to me, ‘Lord, Lord, did we not prophesy in your name, and cast out demons in your name, and do many mighty works in your name?’ And then will I declare to them, ‘I never knew you; depart from me, you workers of lawlessness.’ - Matthew 7:21-23

ROCK?



OR SAND?



Draw a line to match the rock or sand to the kind of person it represents, then circle the one you want to be.

Wise man who
hears the words
of Jesus and
DOES them.

which
one?

Foolish man
who does **NOT**
do what Jesus
says.

“Everyone then who hears these words of mine and does them will be like a wise man who built his house on the rock. And the rain fell, and the floods came, and the winds blew and beat on that house, but it did not fall, because it had been founded on the rock. And everyone who hears these words of mine and does not do them will be like a foolish man who built his house on the sand. And the rain fell, and the floods came, and the winds blew and beat against that house, and it fell, and great was the fall of it.” - Matthew 7:24-27